

# Get Started Guide

**MUST READ**



## Introduction

Hello and welcome to your **Get Started Guide** for your new device for school. Please follow these easy steps to activate your device and start learning.



In this pack you will find important information to set up your device for learning in the following sections:

- Step 1:** Set up Remote Device Management
- Step 2:** Set up Your iPad Passcode
- Step 3:** Set up iCloud
- Step 4:** Get your Book Publisher Apps and eBooks



You will also find information and links to training, videos and resources included in your Wriggle technology bundle to help you get started with your device for learning.

# Getting Started

You will need these before you get started.



Wriggle Information Sheet  
School Details

Important Information.  
Keep this Page Safe

You will need to reference this Information Sheet as you follow your Get Started Guide

A.	First Name, Last Name	Order Number
	10.9" iPad 64GB (10th Gen) iPad Shield Case (10th Gen) Apple 20W Plug Apple AirPods with Charging Case Apple Airtag Galetron iPad Stylus Belkin Multi Device Adaptor	

B.	* Write your four digit passcode here:	<input type="text"/>
	** If you forget your passcode, email Wriggle for advice.	
	*** Your iPad will be <b>DISABLED</b> if you enter an incorrect passcode three times.	

C.	* Your Managed Apple Account:	<input type="text"/>
	* Your 4 digit managed Apple Account password is:	<input type="text"/>
	<b>*If you sign out, school work will be lost!</b>	

D.	Ebook Username:	<input type="text"/>
	Ebook Password:	<input type="text"/>

Thank you for ordering from Wriggle Learning.

Your Order: 118

- |  |   |
|--|---|
| <input type="checkbox"/> MPQ03B/A 10.9" iPad 64GB (10th Gen)                                   | <input type="checkbox"/> AP-SXX2-IP10-BLK iPad Shield Case (10th Gen) |
| <input type="checkbox"/> 3YRTRAINSUPPIOS Wriggle - 3YR Digital Technology Training Support iOS | <input type="checkbox"/> MHJF3B/A Apple 20W Plug                      |
| <input type="checkbox"/> MV7N2ZM/A Apple AirPods with Charging Case                            | <input type="checkbox"/> MX532ZM/A Apple Airtag                       |
| <input type="checkbox"/> 3G1M202 Galetron iPad Stylus  | <input type="checkbox"/> INC016myBK Belkin Multi Device Adaptor       |

Wriggle Information Sheet (located inside the box). You will need to refer to this Information Sheet as you go through your guide.



Your New Device



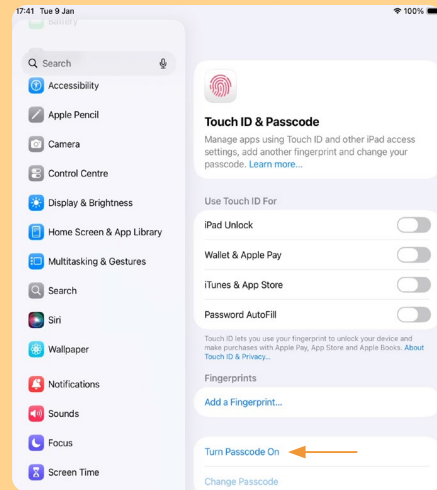
## Step 2.

# Set up your iPad Passcode

### 2.1 Go to **Settings**



### 2.2 Go to **Touch ID & Passcode** on the menu (highlighted on the image below) and Select **'Turn Passcode On'**



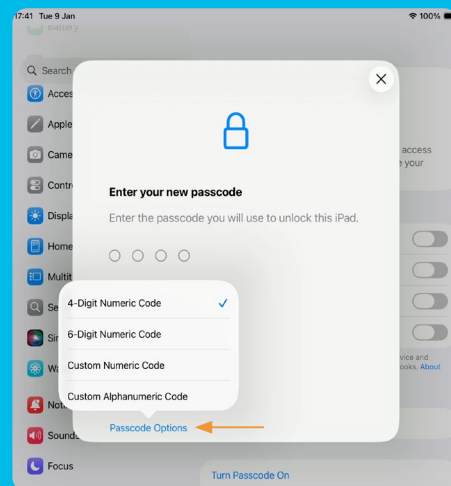
### 2.3 Get your parent/guardian to do this with you! Think of a 4 or 6-digit passcode that's easy for you to remember and write this down on **Section B** of your Wriggle information Sheet

**B.** \* Write your four digit passcode here:

\*\* If you forget your passcode, email Wriggle for advice.

\*\*\* Your iPad will be **DISABLED** if you enter an incorrect passcode three times.

### 2.4 Now enter your 4 or 6-digit passcode. For a 4 digit passcode, select **'Passcode Options and 4 Digit Numeric Code'**



Have you written down your passcode somewhere safe?

**Need help?**  
Scan the QR code or follow the link for step-by-step video guides.  
[bit.ly/GetStartediPad](https://bit.ly/GetStartediPad)



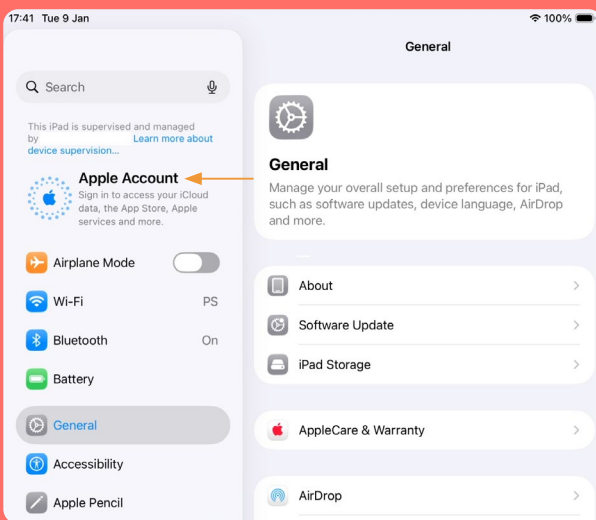
## Step 3.

# Set Up iCloud

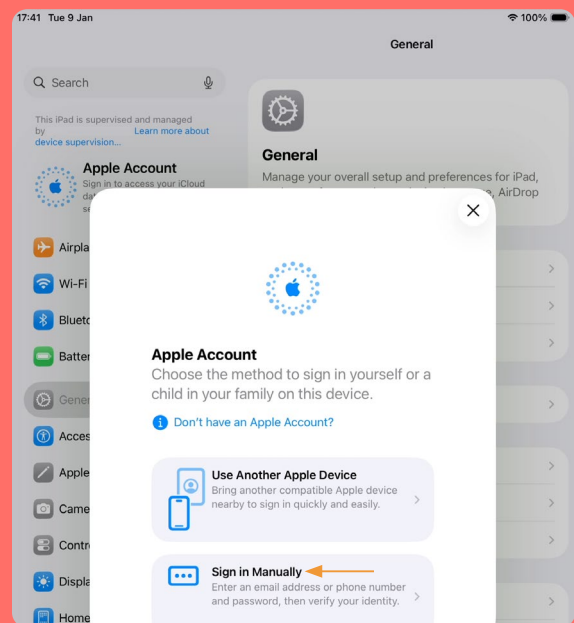
### 3.1 Go to Settings



### 3.2 Go to Apple Account.



### 3.3 Sign in to Apple Account.



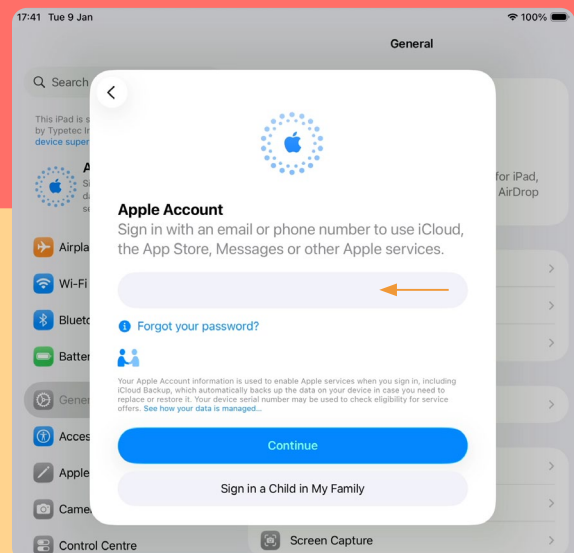
C. \* Your Managed Apple Account:

\* Your 4 digit managed Apple Account password is:

**\* Do not sign out of your managed Apple Account, as this is your iCloud backup.**

**\*If you sign out, school work will be lost!**

### 3.3.1 Sign in to Apple Account.



Your Managed Apple Account details can be found on **Section C** of your **Wriggle Information Sheet**

## Step 3. Continued

### 3.4 Creating a Password

C. \* Your Managed Apple Account:

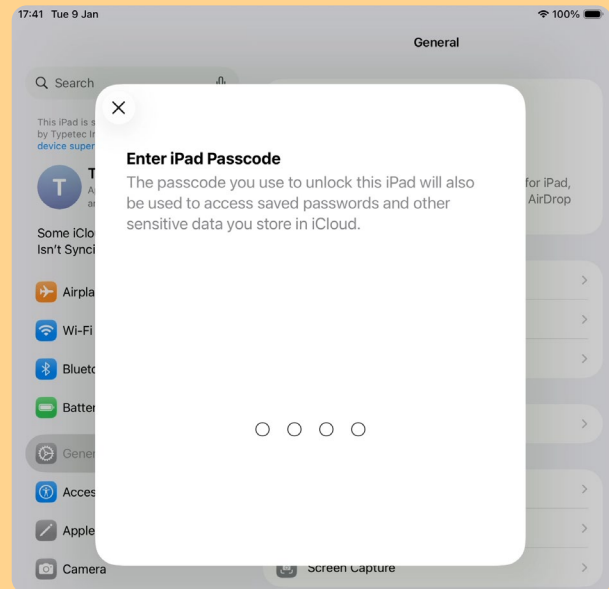
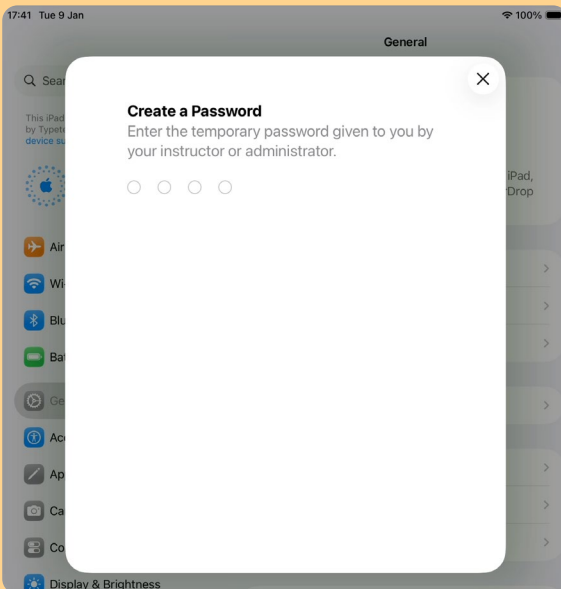
\* Your 4 digit managed Apple Account password is:

**\* Do not sign out of your managed Apple Account, as this is your iCloud backup.**

**\*If you sign out, school work will be lost!**

First, enter the password from **Section C** of your Wriggle Information Sheet.

You will be prompted to create a new password. Your new password can be anything you want.



**Note: You should never sign out of your school Managed Apple Account as you may lose school work and assessment data, which cannot be retrieved.**

**Need help?**  
Scan the QR code or follow the link to watch a short video for steps.  
[bit.ly/GetStartediPad](https://bit.ly/GetStartediPad)



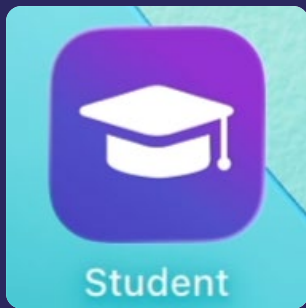
## Step 4.

# Get your Book Publisher Apps & eBooks

**Important:** If you receive physical textbooks from your school, you will be able to download a digital eBook for each of your textbooks to your device. We have made this process easier for you by creating the account you can use to log into your eBook Apps.

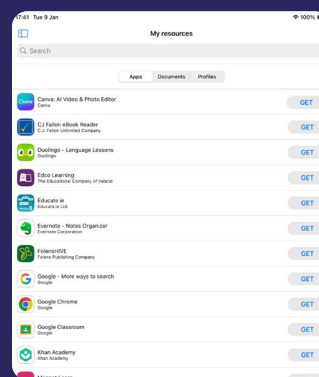
**Schools may have different processes around physical books and eBooks, so please check with your school if you are unsure.**

### 4.1 Click on the Student App on your device



Click on the Student app on your home screen

### 4.2 Click on 'Get' for each App required



You will now see this screen. All of your eBook apps and school apps will download through this Student app. Download time will vary depending on Wi-Fi speeds.



All of your Book Publisher apps will now download. They look like this.

### Need help?

Every publisher is slightly different. Please scan the QR code or follow the link to watch the video guides before you attempt to log in. Once you have followed all videos and guides for each of your books' publishers, you may now follow step 4.3 to log in. [bit.ly/ipadebooksdownload](https://bit.ly/ipadebooksdownload)



### 4.3 Sign into each of your Book Publisher Apps using the ebook username and password on your information Sheet.

**D.**      **Ebook Username:**  
**Ebook Password:**

**Congratulations! You have now completed the setup process. Please continue reading for access to our helpful training courses, frequently asked questions and more.**

# WriggleConnect

## family

Now that your device is setup, you will need to access our online training platform.

This platform is designed to support you with guidance on downloading and using eBooks, device settings, managing updates and lots more!

### To gain access to the platform you will need to follow these steps:

- Go to the inbox of the email account (parent/guardian) that was used to purchase the device bundle on the **Wriggle Store**.
- You will recently have received an email from **Wriggle Connect** advising you to activate your account (you may need to check your junk/spam filter in case it has been caught in there).
- Once you have activated your account and set a password, you will now be able to access **Wriggle Connect**! If you have any issues with signing in, you can simply click the “**Forgot your password?**” icon on the login screen at **[www.family.wriggleconnect.ie](http://www.family.wriggleconnect.ie)**
- When you have logged in, we would advise that you click on the ‘**Getting Started with your iPad Device**’ course, watch the videos, answer the questions and get your first certificate on **Wriggle Connect**!



# 4 Courses to Help You Get Started

Scan the QR codes below with your smart phone or follow the links to access the courses below.

1



[bit.ly/troubleshootingipad](https://bit.ly/troubleshootingipad)  
Troubleshooting your iPad

2



[bit.ly/ipadparentalcontrols](https://bit.ly/ipadparentalcontrols)  
Parental Controls for Security and Privacy

3



[bit.ly/accessibilityforlearning](https://bit.ly/accessibilityforlearning)  
Accessibility for Learning

4



[bit.ly/cybersafekidsbtb](https://bit.ly/cybersafekidsbtb)  
CyberSafe Kids - Back to Basics



Wishing you lots of fun and exciting learning experiences with your new device.

## The Wriggle team

[www.wriggle.ie/support](http://www.wriggle.ie/support) | [info@wrigglelearning.ie](mailto:info@wrigglelearning.ie)

**wriggle**  
Technology for Learning

 Authorised  
Education Specialist

